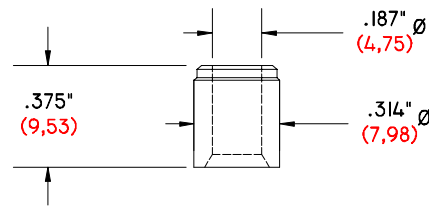
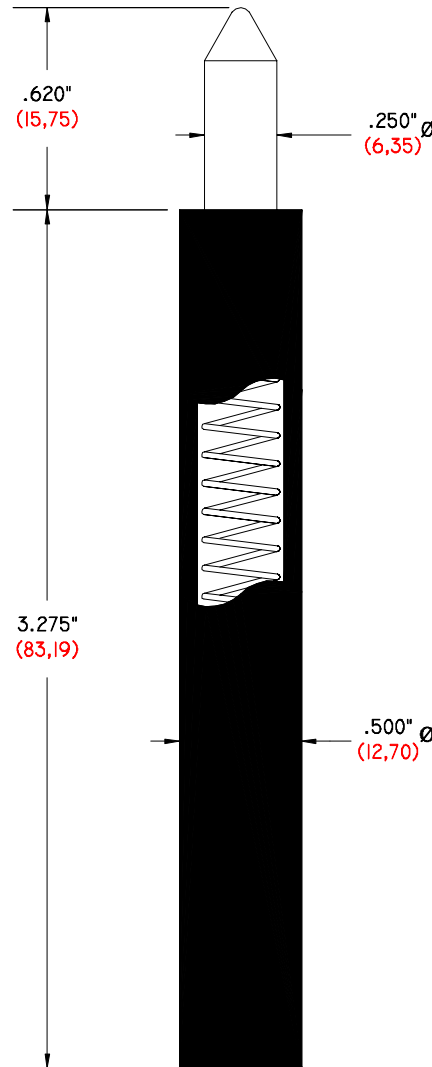


.500" (12,70) DIAMETER TOP-BOTTOM ALIGNMENT ASSEMBLY FOR DOUBLE SIDED TEST FIXTURES



GI-375-314 TBAB
TOP BOTTOM ALIGNMENT
BUSHING



GI-3.275-250/500 TBAA
TOP BOTTOM ALIGNMENT
ASSEMBLY

MATERIAL: PIN- HARDENED DRILL ROD.
BUSHING- HARDENED DRILL ROD.
HOUSING- DELRIN.
SPRING- MUSIC WIRE (SPRING STEEL), NICKEL PLATED.

SPRING PRESSURE: 8 LBS. (3.629 KILOGRAMS).

RECOMMENDED FIXTURE DRILL SIZES	
PART NUMBER	MOUNTING HOLE DRILL DIAMETER
GI-3.275-250/500 TBAA (HOUSING)	.505" (12,83)
GI-3.275-250/500 TBAA (PIN)	.252" (6,40)
GI-375-314 TBAB (BUSHING)	5/16" .3125" (7,94)