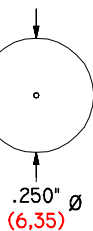
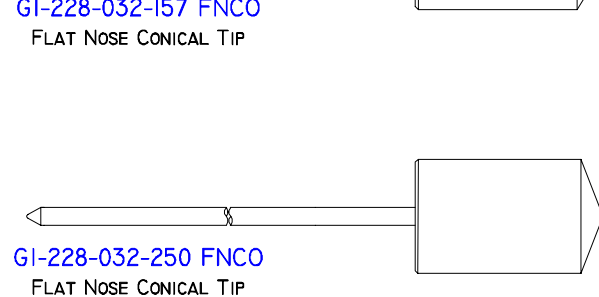
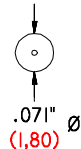
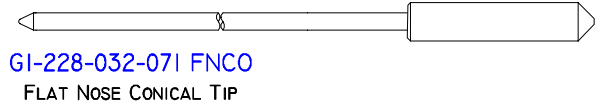
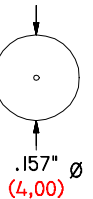
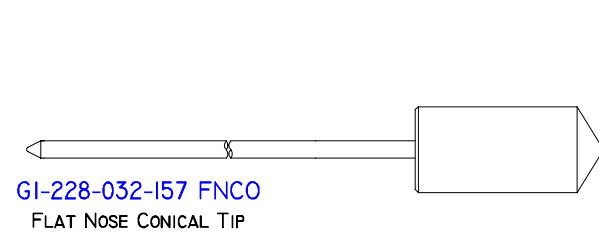
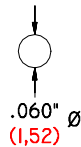
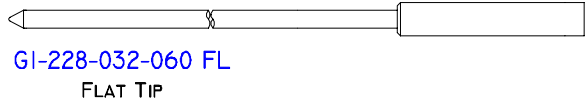
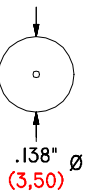
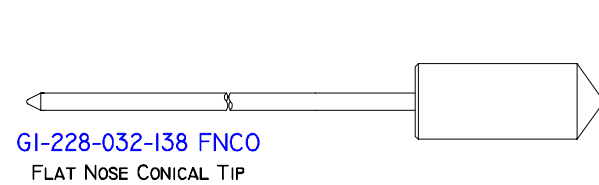
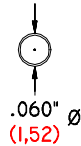
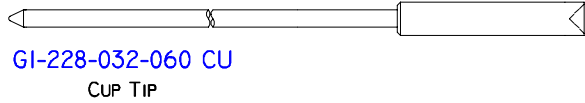
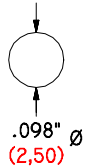
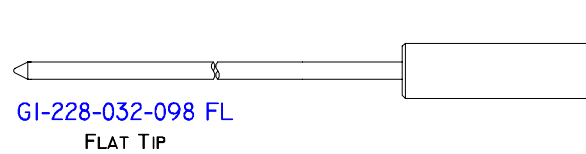
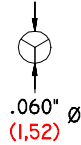
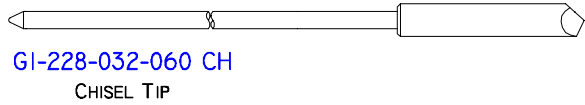
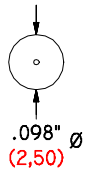
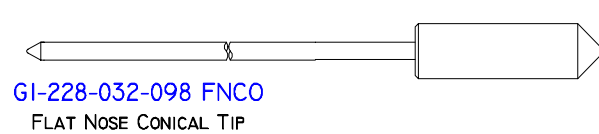
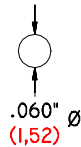
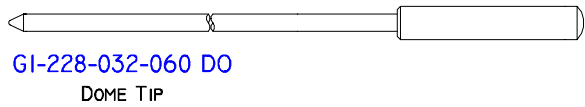
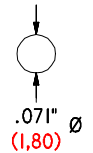
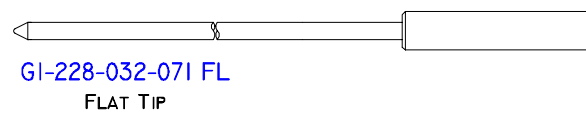
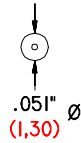
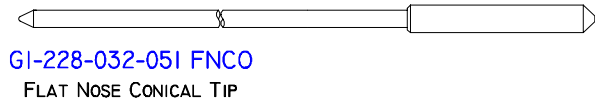
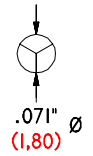
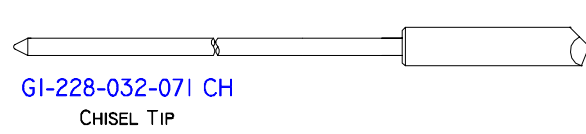
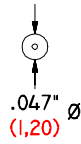
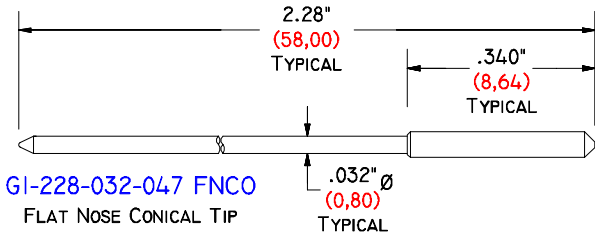


2.28" (58,00) HEADED MUSIC WIRE TRANSLATOR PINS

.032" (0,80) BODY WITH .047" (1,20) TO .250" (6,35) HEAD



MATERIAL: HEAD- HARDENED BERYLLIUM COPPER.
BODY- MUSIC WIRE (SPRING STEEL).

PLATING: HEAD- GOLD OVER ELECTROLESS NICKEL.
BODY- ELECTROLESS NICKEL.

OUR PART NUMBERS DESCRIBE THE DIMENSIONS OF THE PART

EXAMPLE:

GI- 228 - 032- 047 FNCO

