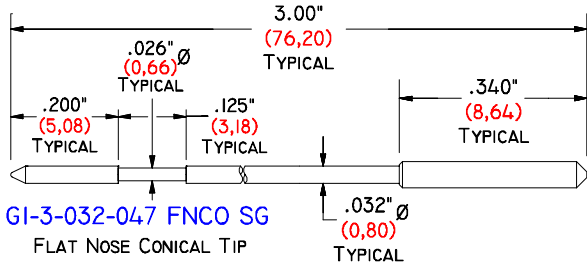
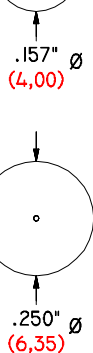
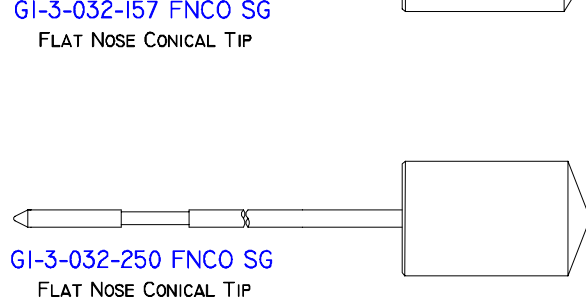
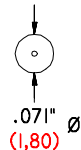
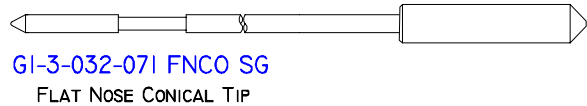
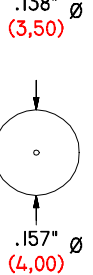
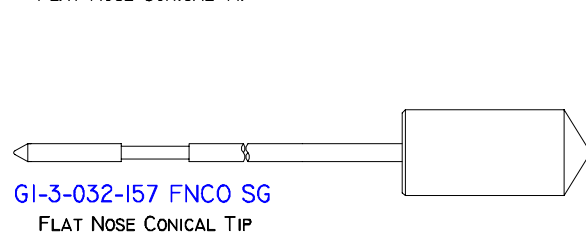
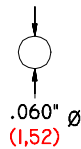
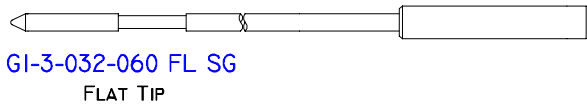
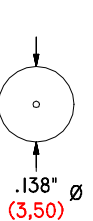
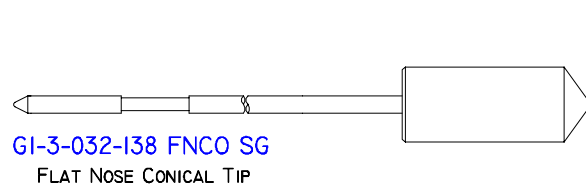
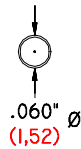
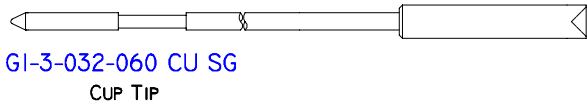
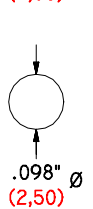
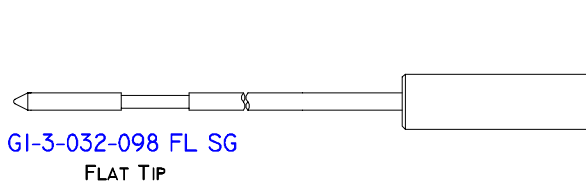
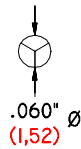
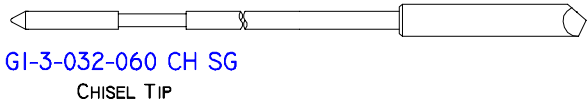
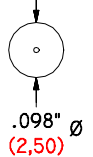
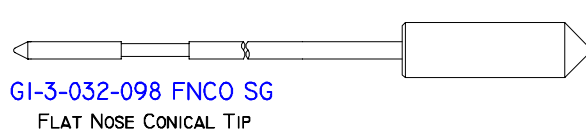
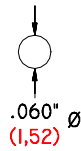
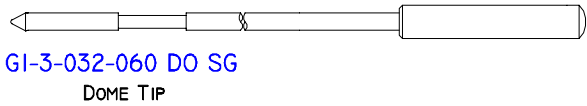
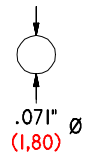
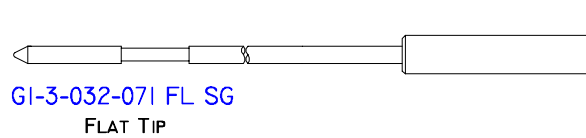
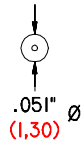
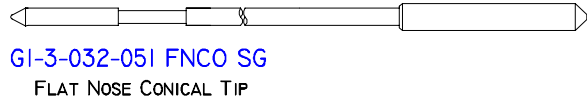
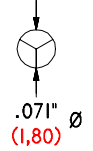
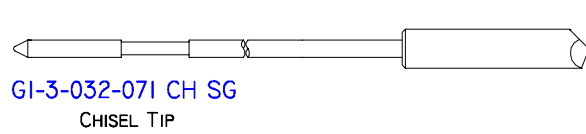
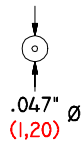


3.00" (76,20) HEADED SINGLE GROOVED MUSIC WIRE TRANSLATOR PINS

.032" (0,80) BODY WITH .047" (1,20) TO .250" (6,35) HEAD



GI-3-032-047 FNCO SG
FLAT NOSE CONICAL TIP



MATERIAL: HEAD- HARDENED BERYLLIUM COPPER.
BODY- MUSIC WIRE (SPRING STEEL).

PLATING: HEAD- GOLD OVER ELECTROLESS NICKEL.
BODY- ELECTROLESS NICKEL.

OUR PART NUMBERS DESCRIBE THE DIMENSIONS OF THE PART

EXAMPLE:

GI-3-032-047 FNCO SG

