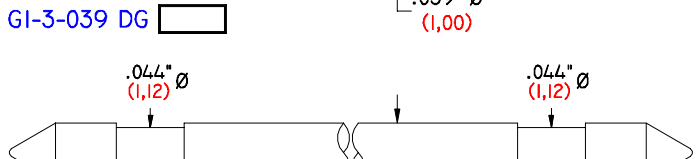
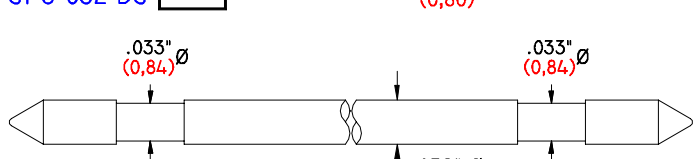
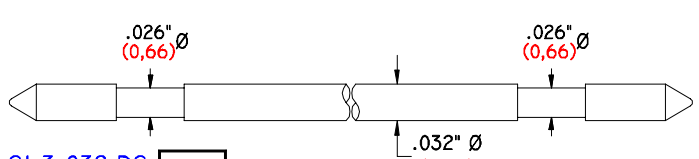
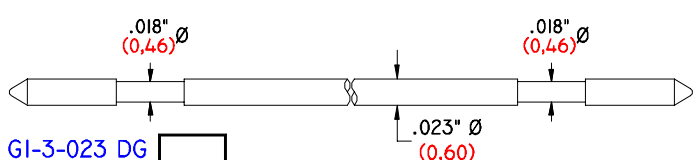
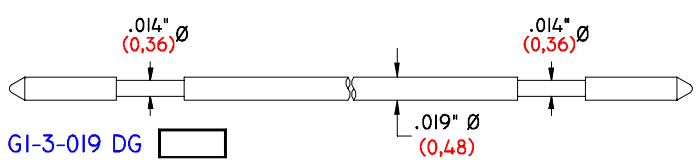
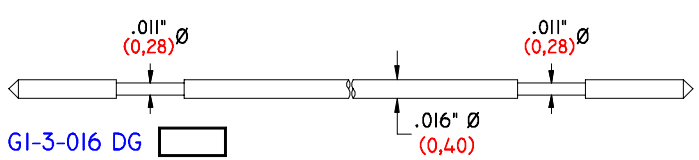
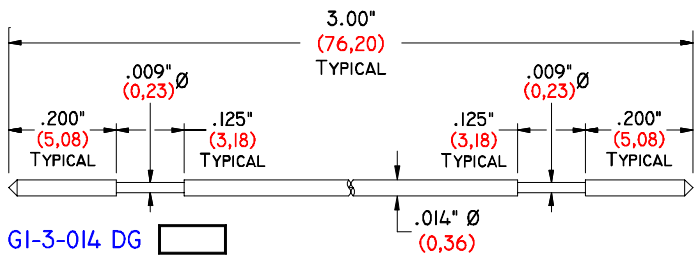
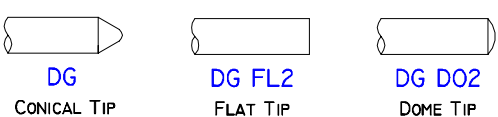
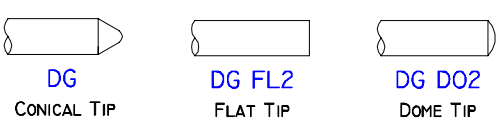
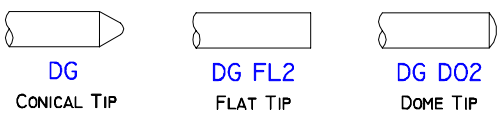
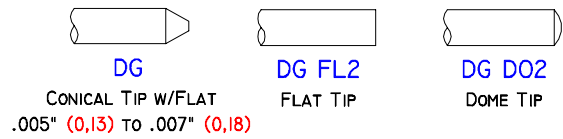
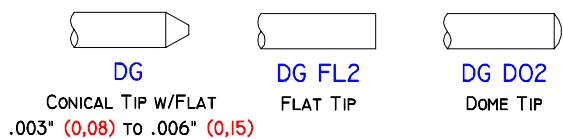


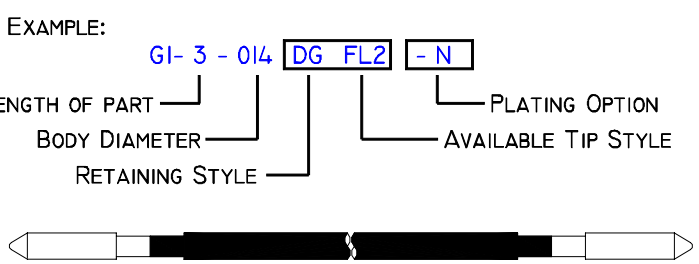
3.00" (76,20) DOUBLE GROOVED MUSIC WIRE TRANSLATOR PINS



AVAILABLE IN THE FOLLOWING TIP STYLES



OUR PART NUMBERS DESCRIBE THE DIMENSIONS OF THE PART



OUR TRANSLATOR PINS .012" (0,30) AND LARGER, CAN BE COATED WITH AN INSULATING MATERIAL. TO ORDER, ADD IP TO THE END OF THE PART NUMBER. PLEASE NOTE THAT THIS COATING WILL ADD .002" (0,05) TO THE OUTSIDE DIAMETER OF THE PIN.

EXAMPLE: GI-3-014 DG IP

MATERIAL: MUSIC WIRE (SPRING STEEL).

PLATING: AVAILABLE IN ELECTROLESS NICKEL (- N)
OR GOLD OVER ELECTROLESS NICKEL (- G)

