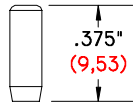
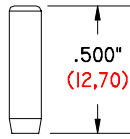


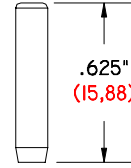
1/8" (3,18) DIAMETER DOWEL PINS FOR TEST FIXTURE FABRICATION



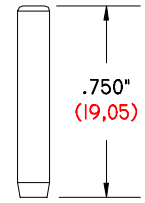
GI-3/8-1/8 DP
 .375" (9,53) LONG
 .125" (3,18) Ø
 DOWEL PIN



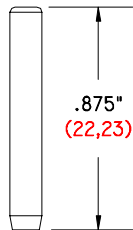
GI-1/2-1/8 DP
 .500" (12,70) LONG
 .125" (3,18) Ø
 DOWEL PIN



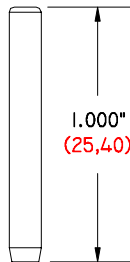
GI-5/8-1/8 DP
 .625" (15,88) LONG
 .125" (3,18) Ø
 DOWEL PIN



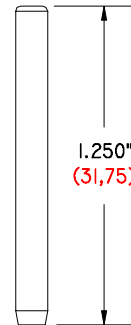
GI-3/4-1/8 DP
 .750" (19,05) LONG
 .125" (3,18) Ø
 DOWEL PIN



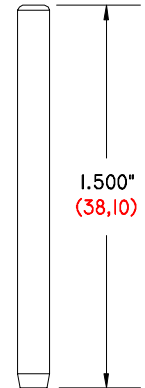
GI-7/8-1/8 DP
 .875" (22,22) LONG
 .125" (3,18) Ø
 DOWEL PIN



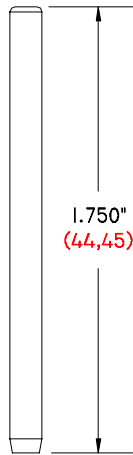
GI-1-1/8 DP
 1.000" (25,40) LONG
 .125" (3,18) Ø
 DOWEL PIN



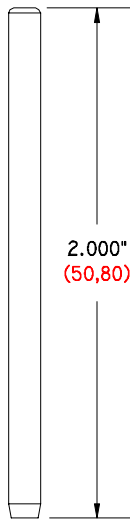
GI-1 1/4-1/8 DP
 1.250" (31,75) LONG
 .125" (3,18) Ø
 DOWEL PIN



GI-1 1/2-1/8 DP
 1.500" (38,10) LONG
 .125" (3,18) Ø
 DOWEL PIN



GI-1 3/4-1/8 DP
 1.750" (44,45) LONG
 .125" (3,18) Ø
 DOWEL PIN



GI-2-1/8 DP
 2.000" (50,80) LONG
 .125" (3,18) Ø
 DOWEL PIN

MATERIAL: HARDENED DRILL ROD.

OUR PART NUMBERS DESCRIBE THE DIMENSIONS OF THE PART:

EXAMPLE:

GI-**3/8**-**1/8** DP

DOWEL LENGTH ——— PIN DIAMETER

CUSTOM DOWEL PINS

CUSTOM OVER ALL LENGTH
 .250" (6,35) MINIMUM
 6.000" (152,40) MAXIMUM

CUSTOM PIN DIAMETER
 .0625" (1,59) MINIMUM
 .500" (12,70) MAXIMUM

DOWEL PINS CAN BE MANUFACTURED TO CUSTOM SPECIFICATIONS. TO ORDER, DEVELOP A PART NUMBER USING THE CUSTOM OVER ALL LENGTH CUSTOM PIN DIAMETER, REQUIRED USING THE MINIMUM / MAXIMUM INFORMATION IN THE ILLUSTRATION ABOVE.

EXAMPLE:

GI-**2500**-**125** DP

OVER ALL LENGTH ——— PIN DIAMETER